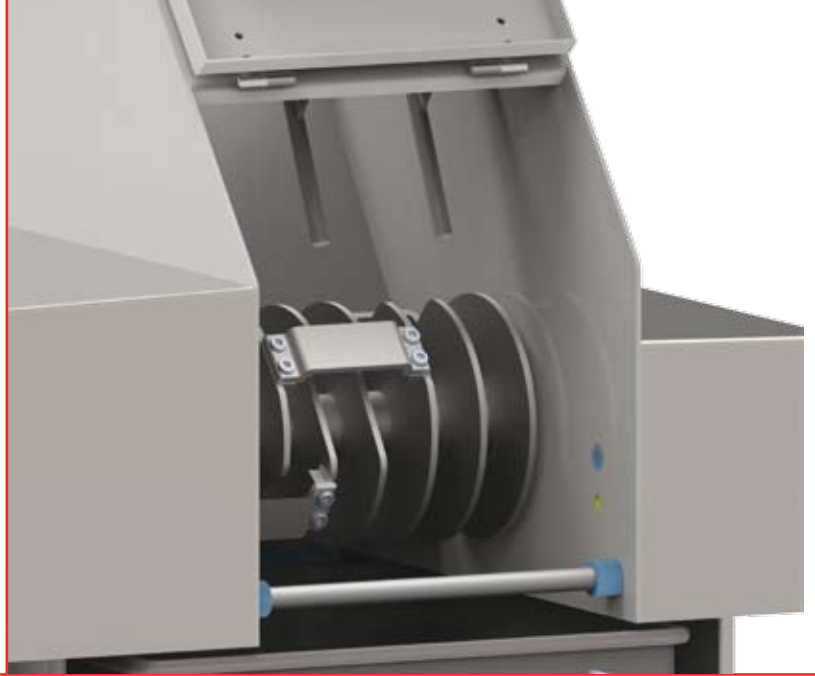


CBC LP2

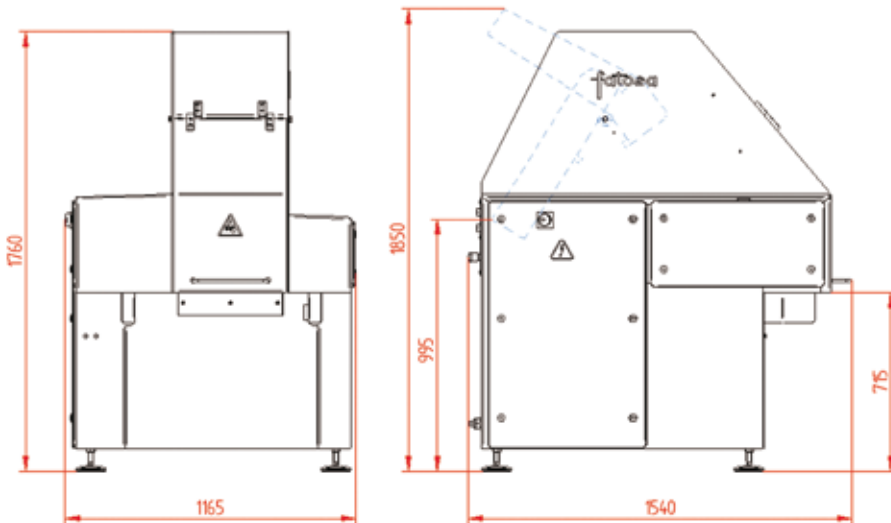


The Flaker of frozen blocks **CBC LP2** is a machine designed to cut frozen blocks of meat or other products at temperatures of up to $-20\text{ }^{\circ}\text{C}$. Thanks to the rotation of a drum equipped with 4 U-shaped blades, this equipment allows to reduce the size of the blocks to irregular portions to facilitate the later processing in bowl cutters or grinders. The machine is equipped with a 7.5 kW motor and can reach an output of up to 2,000 Kg / h.

The Model **CBC LP2** is equipped as standard with a pneumatic load tray, which ensures the work of the machine operator in optimal ergonomic conditions. The **CBC LP2** can work with blocks of maximum dimensions of 400x600x200 mm (E2 Blocks). The unloading of the cut product is carried out directly on standard 200-litres bins, although the machine can also be prepared for unloading on a conveyor belt or screw. Optionally the machine can be equipped with a closed drum to reduce the thickness of the cut pieces.



CHARACTERISTICS



CBC LP2

Production - max.	2000 Kgs/hour
Total power	7,5 kw
Block size	400x600x200
Meat min. temperature	-20° C

fatosá

Telf. 1: +34 937 266 399

Telf. 2: +34 937 266 889

Fax. : +34 937 274 046

Mail: info@fatosá.com

Ctra. de Terrassa, 217
08205 Sabadell (Barcelona)
España

www.fatosá.com